

The logo for LINC (Lombardia International Network in Cardiovascular) features a stylized, colorful graphic of a heart or vessel in shades of red, orange, and blue, with the letters 'LINC' in white to its right.

LINC

PERCUTANEOUS TRANS-GLUTEAL EMBOLIZATION OF AN INTERNAL ILIAC ARTERY ANEURYSM IN A CASE OF OCCLUDED ILIAC BRANCHED ENDOPROSTHESIS (IBE)

Maria Antonella Ruffino, MD, EBIR

Vascular Radiology

Department of Diagnostic Imaging and Radiotherapy

Città della Salute e della Scienza – San Giovanni Battista Hospital

Torino, Italy



mariaantonellaruffino@gmail.com



Disclosure

Speaker name:

Maria Antonella Ruffino, MD, EBIR

I have the following potential conflicts of interest to report:

- Consulting
- Employment in industry
- Stockholder of a healthcare company
- Owner of a healthcare company
- Other(s)

- I do not have any potential conflict of interest

MALE, 79 Y.O.

RISK FACTORS:

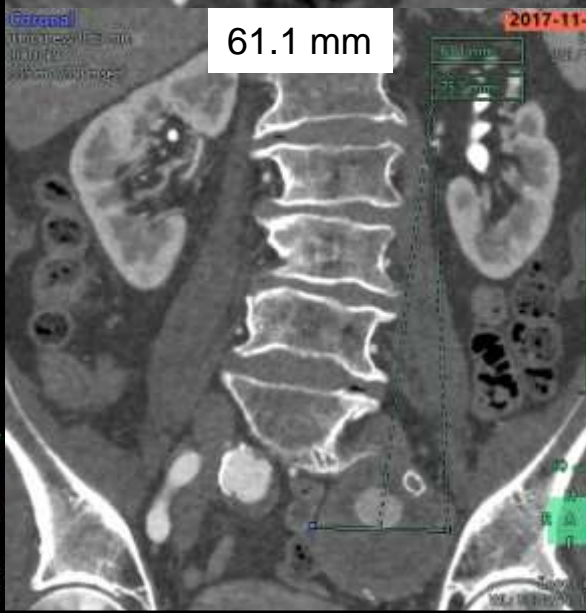
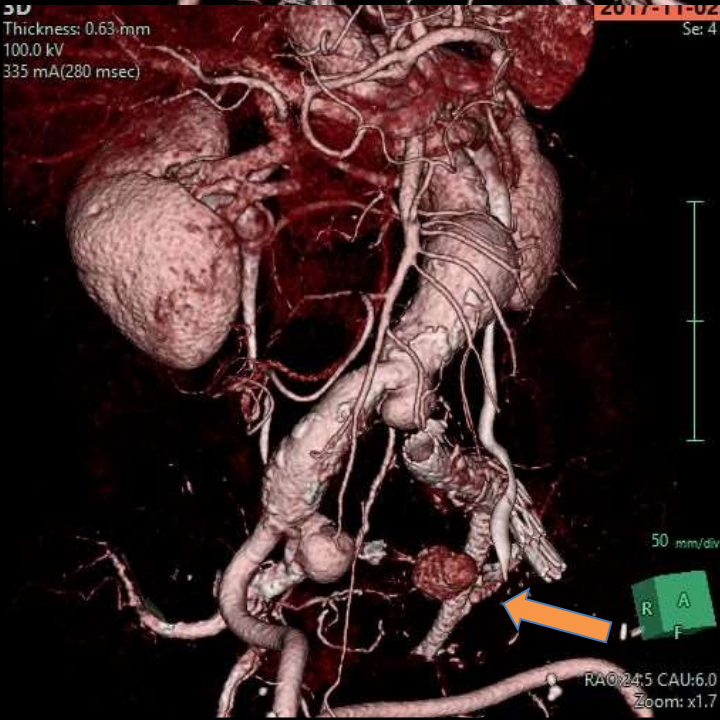
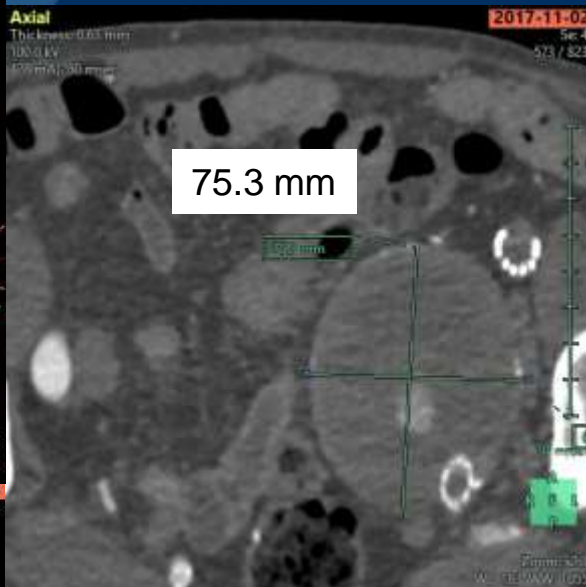
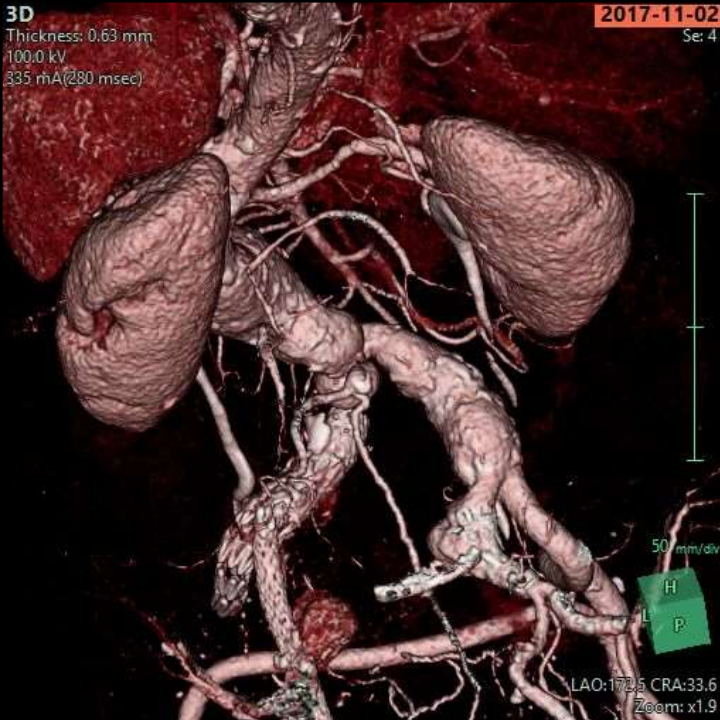
- Hypertension
- Dyslipidemia

CLINICAL HISTORY:

- anterior rectum resection and termino-terminal colo-rectal anastomosis through xipho-pubic access for a degenerated polyp
- 2011: left IBE
- 2012: endoleaks of type I treated with proximal cuff resulting in thrombosis of the left iliac-femoral axis
- femoral-to-femoral right to left crossover bypass

CARDIOLOGICAL HISTORY

- 2017: atrial fibrillation in oral anticoagulant therapy

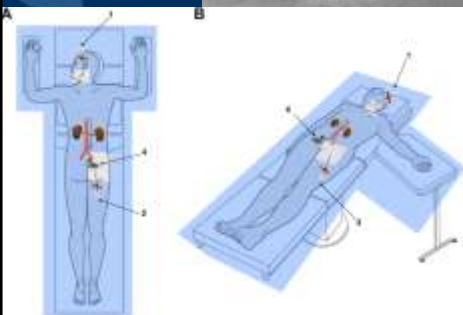
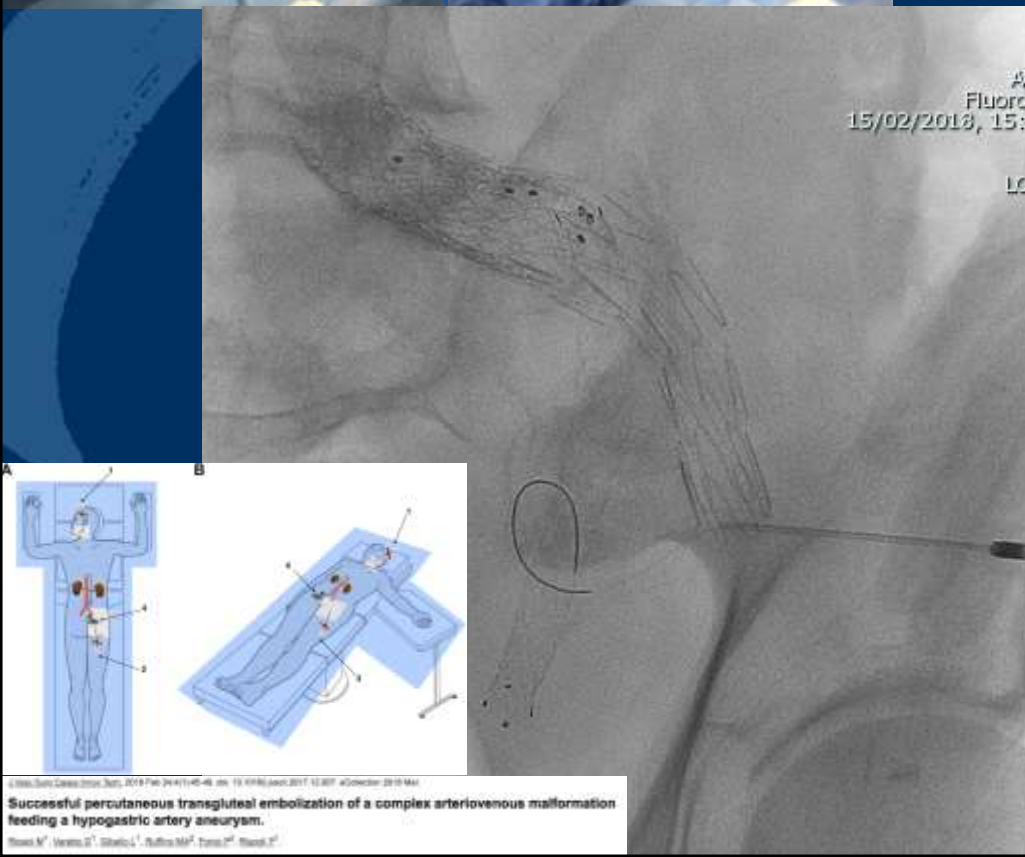




- Patient in prone position
- Local anesthesia and trans-gluteal puncture were performed under ETG guidance
- Kimal distal access kit
- 4-F, 45 cm sheath (Flexor® with CheckFlo® Valve KCFW-4.0-18/35-45-RB-ANL0-HC Introducer, Cook Medical)



Kimal distal access kit



© 2005, Stryker Covidien Group, 2018 Feb 24 11:45:46 AM, 19. KPMG, 2017 12:07, #Collector 2819 Mar
Successful percutaneous transluteal embolization of a complex arteriovenous malformation feeding a hypogastric artery aneurysm.
Rovati M, Verstra S, Stabile L, Ruffino M, Tassi M, Rovati M

Flu
15/02/2018, 15:24:07

- Radifocus® Guidewire M Standard Type, Terumo
- Tempo Aqua® Straight 4-F, 65 cm, Cordis
- VortX™, pushable coils, Boston Scientific

Fluor
15/02/2018, 15:24:07

Addome
Fluoroscopia
15/02/2018, 15:24:07

LOC: ---

Boston Scientific Pushable Coil Portfolio

Versatile and Cost-Effective



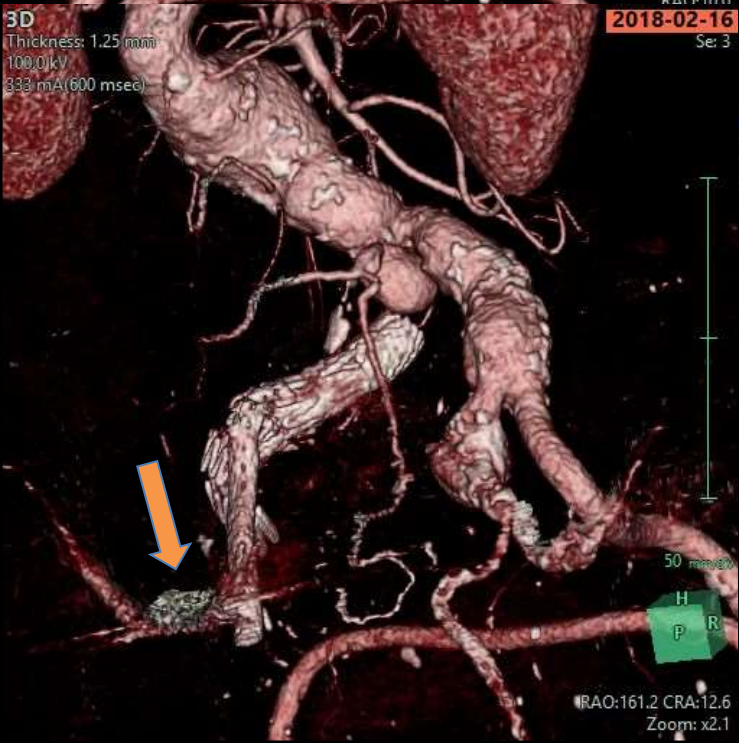
Six Shapes (L to R): Complex Helical, VortX™, VortX Diamond, Straight, Figure 8, Multi-Loop (20 Helical)



Coil Length	Coil Diameter										
	2 mm	3 mm	4 mm	5 mm	6 mm	7 mm	8 mm	9 mm	10 mm	11 mm	
0-3cm											
4-6cm											
7-9cm											

Legend: 0.018" Pushable Coils 0.035" Pushable Coils

- Include highly thrombogenic, dense Dacron® fibers designed for fast and complete occlusion
- Have MRI conditional compatibility (up to 3.0 Tesla)
- Are recommended for use with continuous flush setup



TAKE-HOME MESSAGE

In suitable anatomy, a complete full percutaneous endovascular approach to superior gluteal artery under DUS guidance can be safely performed

In case of unfavorable anatomy, however, accurate preoperative planning and CT scan guidance are mandatory to avoid technical failure and systemic complications

The logo for LINC (Lombardia International Network in Cardiac) features a stylized heart shape composed of overlapping red and blue curved lines, with the letters 'LINC' in white capital letters to its right.

LINC

PERCUTANEOUS TRANS-GLUTEAL EMBOLIZATION OF AN INTERNAL ILIAC ARTERY ANEURYSM IN A CASE OF OCCLUDED ILIAC BRANCHED ENDOPROSTHESIS (IBE)

Maria Antonella Ruffino, MD, EBIR

Vascular Radiology

Department of Diagnostic Imaging and Radiotherapy

Città della Salute e della Scienza – San Giovanni Battista Hospital

Torino, Italy



mariaantonellaruffino@gmail.com

